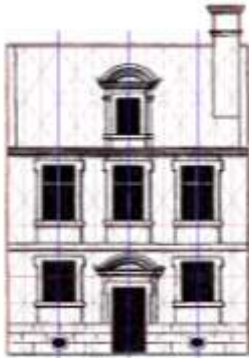
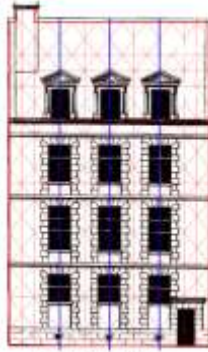


PIERRE Le MUET (1591-1669)

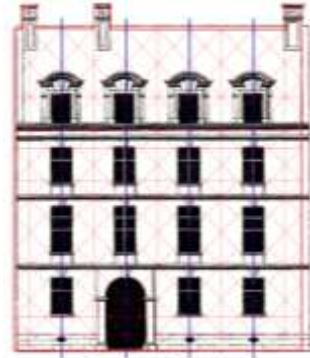
Treatise « Manière de Bien Bastir » (1623, 1647, 1664, 1681, 1723) –
 English Edition ed. by R. PRICKE, “The Art of Sound Building” /”The Art of Fair
 Building” (1670, 1675, 1679)



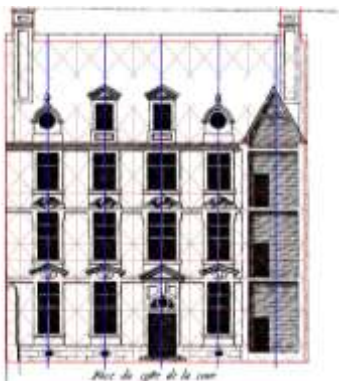
Plan de la façade de
 Pierre Le Muet (1591-1669),
 L'Art de Bien Bastir 1623, 1



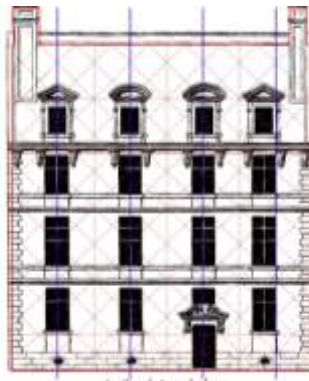
Plan de la façade de côté de la rue.
 Le Muet, Pariser
 Stadthaus, 23A



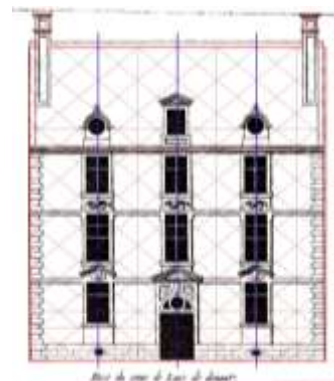
Plan de la façade de la rue de la Cour.
 Le Muet, Stadthaus, *ibid.*, 29



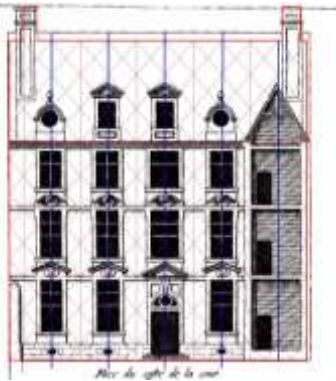
Le Muet, Stadthaus, *ibid.*, 31



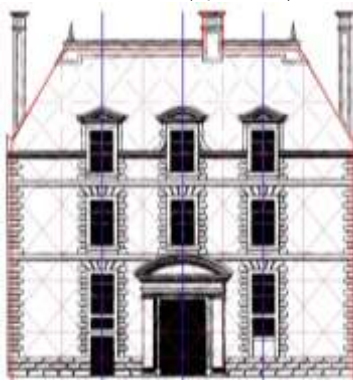
Le Muet, *ibid.*, 33 (Quadratur)



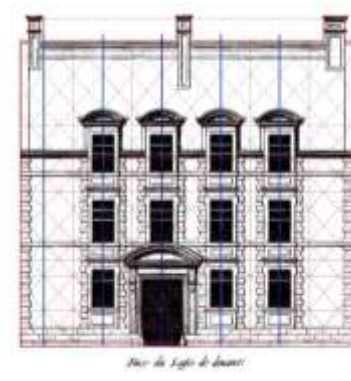
Le Muet, *ibid.*, 37



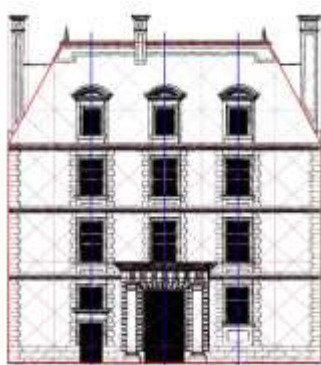
Le Muet, *ibid.*, 39



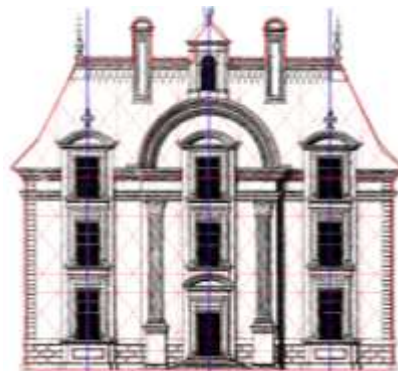
Le Muet, *ibid.*, m 53 (Golden Tr.)



Le Muet, *ibid.*, 61

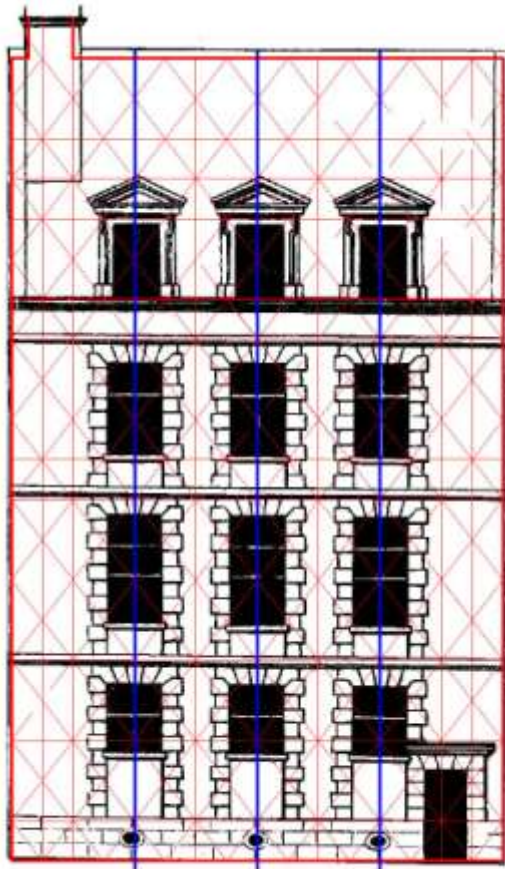


Le Muet, *ibid.*, 69

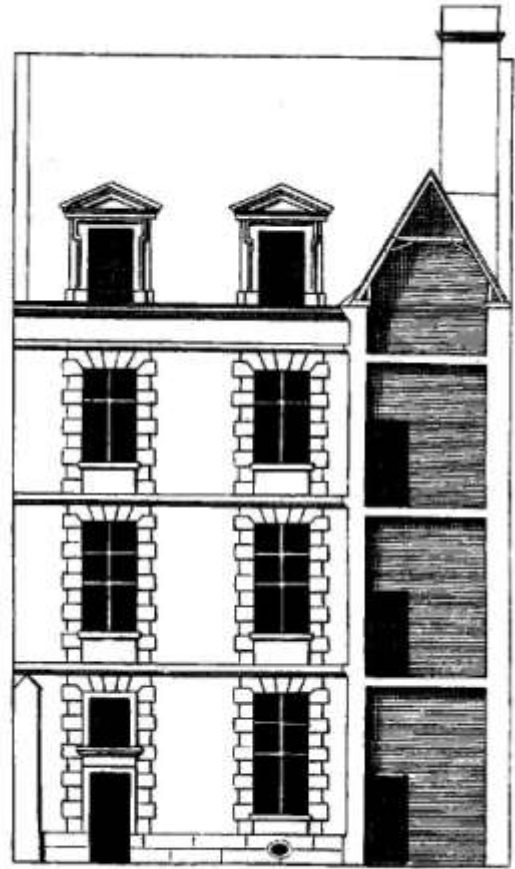


Le Muet, *ibid.*, 95

Slide 49 : PIERRE LE MUET (1591-1669), pl. 2

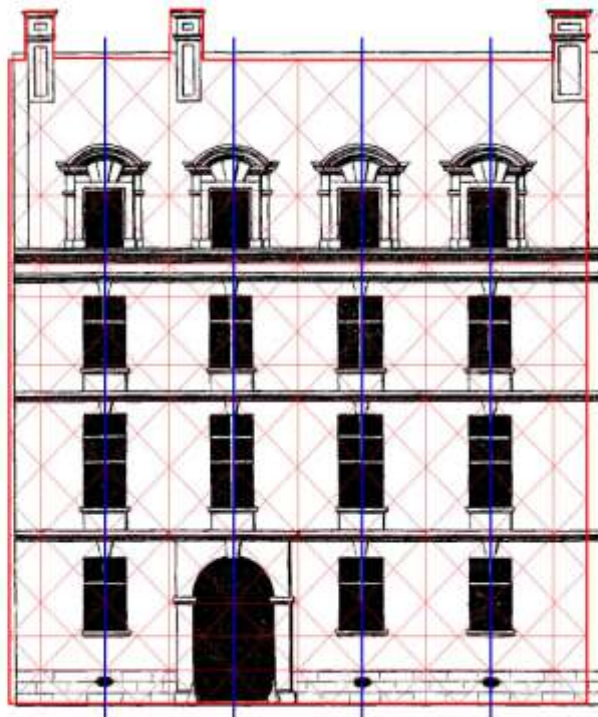


Face du logis du cote de la rue.



La face du costé de la cour.

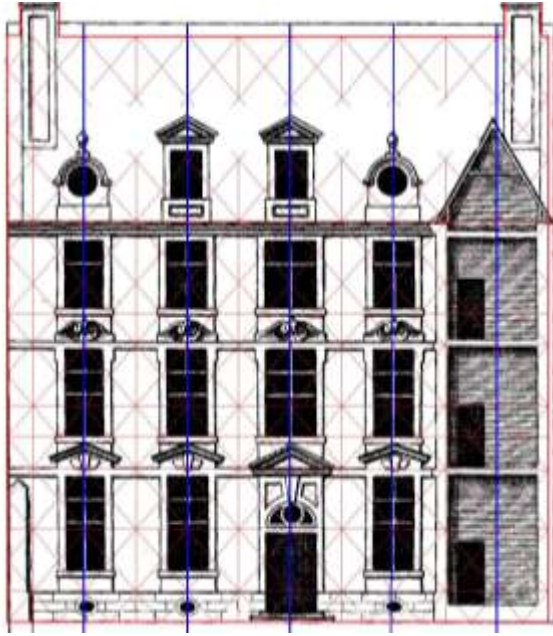
Pierre LeMuet, Stadthaus (Bien Bastir, 23)



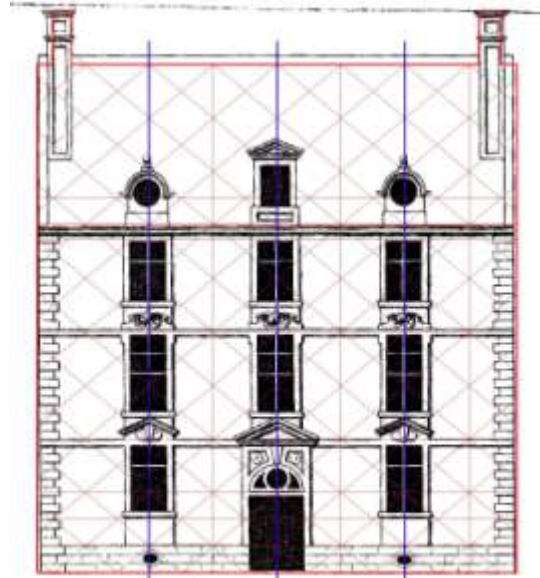
Face du corps de Logis de devant.

Pierre LeMuet, Stadthaus (Bien Bastir, 29)

Slide 50 : PIERRE LeMUET, pl. 3

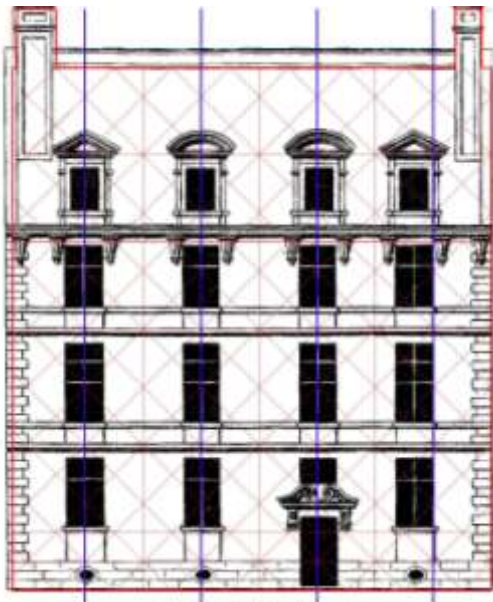


LeMuet, Bien Bastir, 39

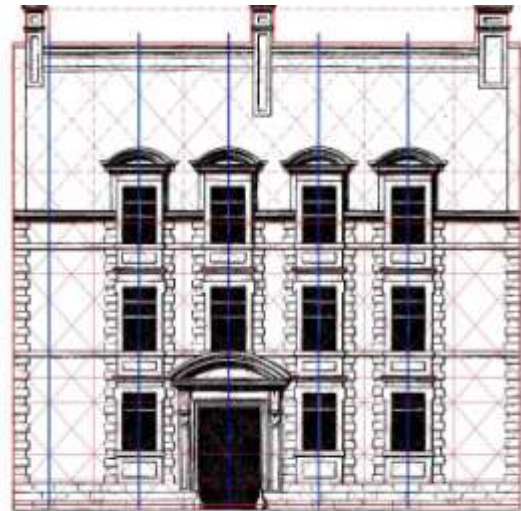


Face du corps de Logis de devant.

LeMuet, Bien Batir, 37

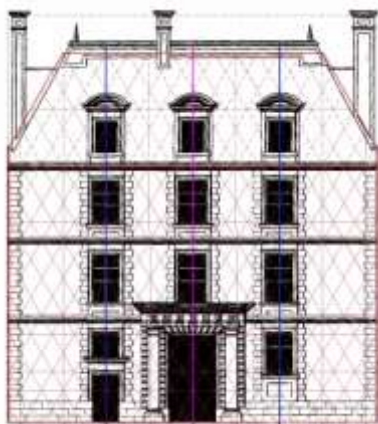


LeMuet, Bien Bastir, 33



Face du Logis de devant.

LeMuet, Bien Bastir, 61

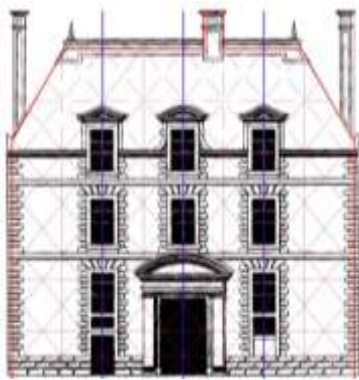


LeMuet, Bien Bastir, 69

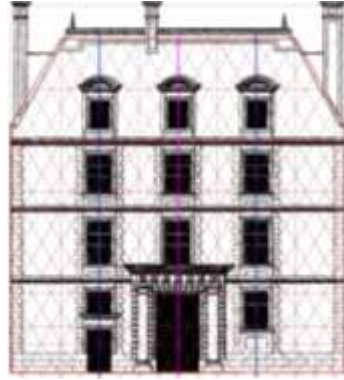


LeMuet, Bien Bastir, 19

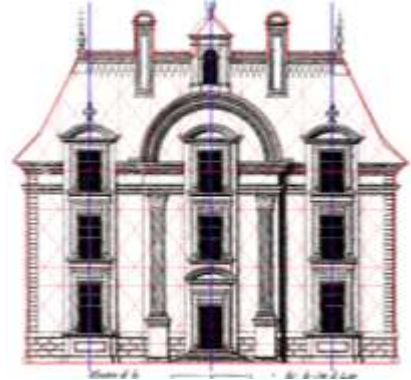
PIERRE LeMUET (1591-1669), Selection from “L’Art de Bien Bastir”1623.



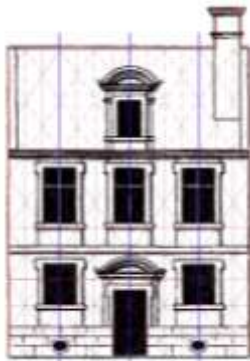
Le Muet, *ibid.*, 53 (Golden Triangle P.)



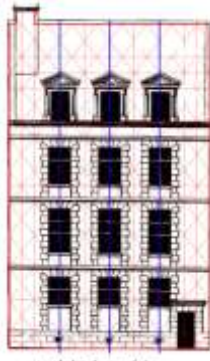
Ibid., 69



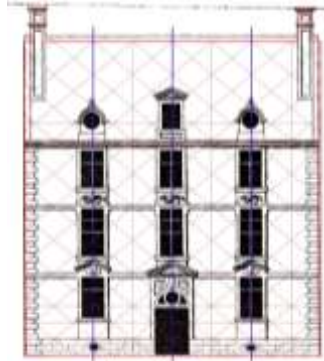
ibid., 95



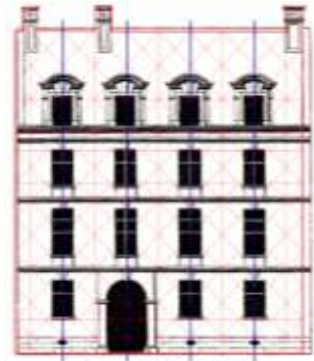
L’Art de Bien Bastir 1623, 19 Paiser Stadthaus, 23A



Paiser Stadthaus, 23A



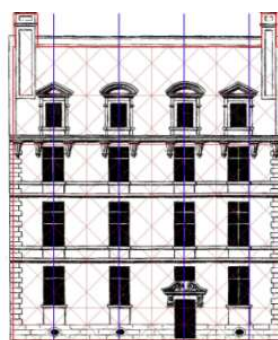
Le Muet, *ibid.*, 37



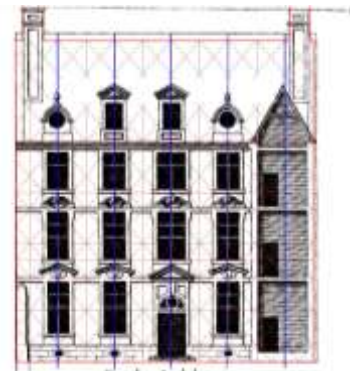
Stadthaus, *ibid.*, 29



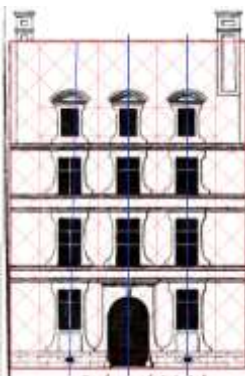
Le Muet, *ibid.*, 61



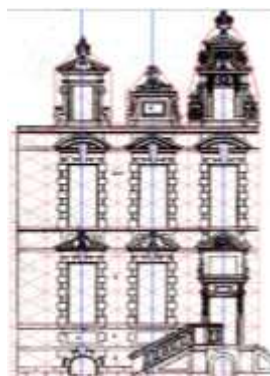
LeMuet, *Bien Bastir*, 33



ibid., 31



ibid., 27



Jacques Gentilhâtre (1578-
ca. 1623),

The treatise of Pierre LeMUET (from Dijon) on „sound building of townhouses” was approx. six times reprinted until 1723, and also translated into English to serve to become an influential guide for the rebuilding of London after the Great Fire of 1666. LeMuet was surely influenced by SERLIO’s printed and unprinted design materials. It looks probable on one hand that LeMuet adapted the clarity of Serlio’s Italian design to French preferences, on the other hand that LeMUET was also been influenced by particular French TVA. His influence on the design of townhouse everywhere in France - particularly at Paris - was strong in the urban French urban architecture until ca. 1900.